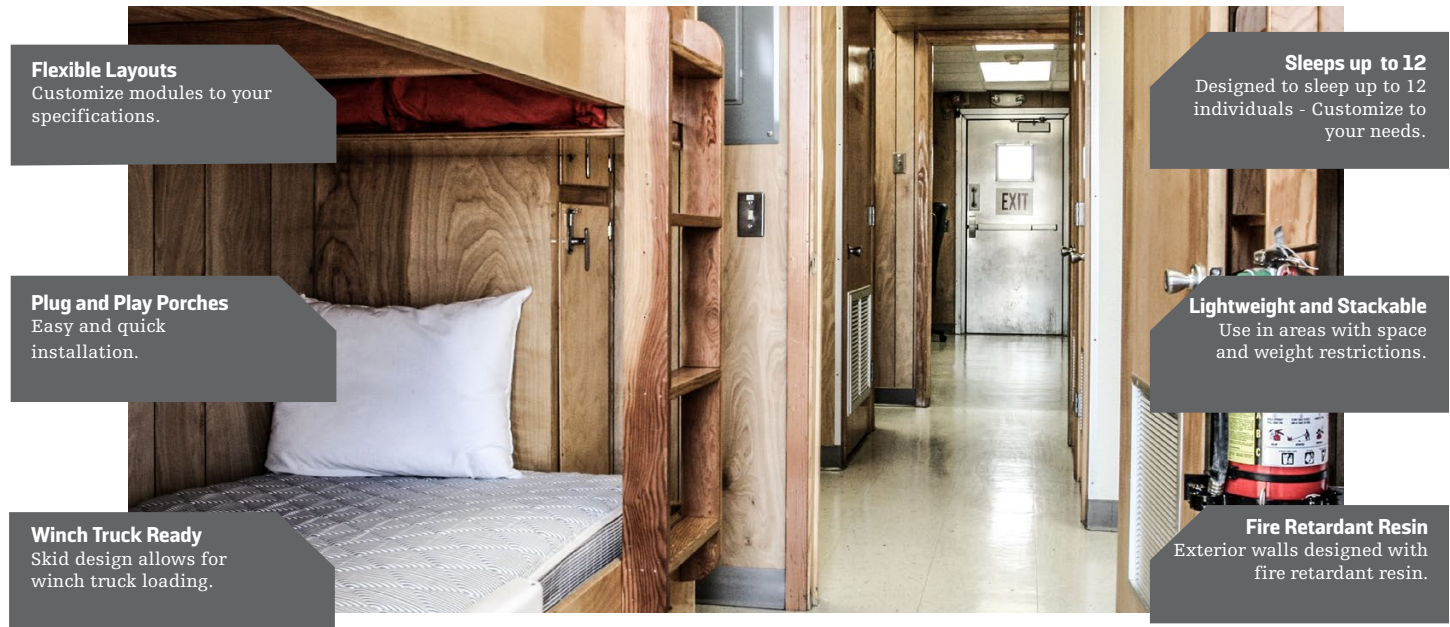


## Fiberglass Stackable Sleeper

### LIGHTWEIGHT SLEEPERS FOR NON-CLASSED SAFE AREAS



#### Flexible Layouts

Customize modules to your specifications.

#### Plug and Play Porches

Easy and quick installation.

#### Winch Truck Ready

Skid design allows for winch truck loading.

#### Sleeps up to 12

Designed to sleep up to 12 individuals - Customize to your needs.

#### Lightweight and Stackable

Use in areas with space and weight restrictions.

#### Fire Retardant Resin

Exterior walls designed with fire retardant resin.

The Fiberglass Stackable Sleepers are designed with features to keep workers more comfortable and increase work site productivity. Each bed is provided a bunk drawer and a locker. HB Rentals' line of Fiberglass Stackable Sleepers is a cost conscious lightweight alternative to heavier modules. Perfect for non-classed safe area use where regulatory restrictions do not apply or have a limited footprint.

#### Easy Deployment

- Plug and play porches for easier installation.
- Can be utilized where crane capacity limitations are present.
- Winch Truck Ready – alternative loading, transportation, and installation method.

#### Purpose Designed for your Project Requirements

- Designed to sleep up to a maximum of 12 individuals.
- Flexible layouts – modify standard floor plans to your specific requirements.
- Footprint Sensitive – Save valuable deck/site space with stackable design.
- Lightweight – Modules to be utilized on sites with weight limitations.

#### Option for Non-Classed Use

- Alternative to steel – Fiberglass modules can be utilized as an alternative on non-classed facilities.

#### Enhance Employee Safety

- Equipped with standard fire and gas detection.

- Exterior construction possesses a layer of fire retardant resin to mitigate risk.

#### Maintenance Friendly

- Central AC unit mitigates the risk of damage.
- Plug and Play AC design for easy removal and replacement – avoid incurring HVAC specialist costs.
- Vinyl composite tiled flooring for easy replacement and cleaning.

#### Enhanced Wet Area

- Industry leading shower stall size - 36"x36."
- Elongated toilet bowls.
- 36' sleeper module's wet area comes equipped with dual furnishing – two sinks, two showers, two toilets.

#### Bedroom features designed to keep employees comfortable

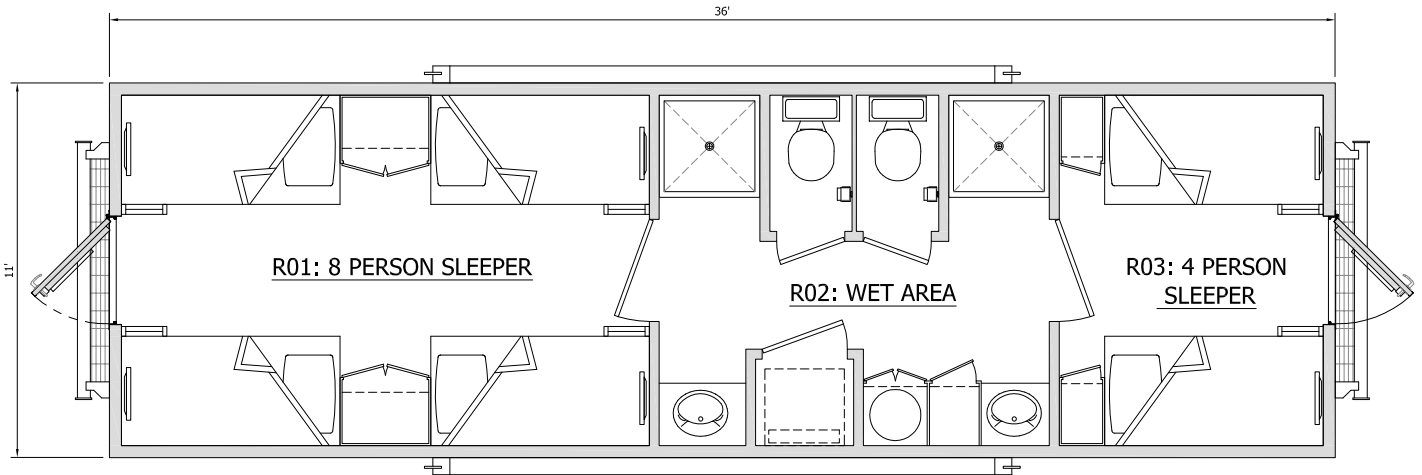
- Bed lockers and bunk drawers for individual storage are standard.
- Equipped with reading lights and electrical outlets with fire retardant privacy curtains.



Wet Unit



Exterior



1 PLAN VIEW: GENERAL ARRANGEMENT

## Specifications

### Dimensions / Weights:

12' L x 8' W x 10'8" H – 8,200 lbs  
 20' L x 12' W x 11'2" H – 14,100 lbs  
 28' L x 11' W x 11'2" H – 18,000 lbs  
 32' L x 11' W x 11'2" H – 19,000lbs  
 36' L x 11' W x 11'2" H – 21,000 lbs

### Structure:

Wood frame  
 Fiberglass encapsulate exterior  
 Fire retardant resin

### Transportation:

Steel wide flange skid with winch  
 truck hitch

### Fire & Gas:

Fire detection  
 Gas detection (optional)

### Climate Control:

Central AC System

### Power Supply:

3 Ph + E  
 208V  
 60 amp (Sleeper)

## Regional Offices

### Corporate Headquarters

5813 Highway 90 East  
 Broussard, LA 70518 USA  
 Tel +1 337 839 1641  
 Toll Free 800 262 6790

### Americas Corporate Sales

11330 Clay Road  
 Ste 200  
 Houston, TX 77041 USA  
 Tel +1 281 999 0047  
 Fax +1 281 999 6505  
 Toll Free 866 999 0040

### Europe, Middle East Africa, Asia-Pacific

Howe Moss Drive  
 Kirkhill Industrial Estate,  
 Dyce, Aberdeen, AB21 OGL  
 Tel +44 1224 772304  
 Fax: +44 1224 772641

more info at [www.hbrentals.com](http://www.hbrentals.com)

## Offshore Operating & Service Facilities

### Aberdeen, UK

Europe, Middle East, Africa, Asia-Pacific Support

### Broussard, USA

Main Operating Facility

### Trinidad and Tobago

Ciudad del Carmen, Mexico

### Global Markets

Asia-Pacific  
 Europe  
 Middle East  
 Mexico  
 Trinidad and Tobago  
 United States/  
 Canada